

ARCHITONIC GUIDE
SWISSBAU
BASEL
2018

16–20 JANUARY

Der Architonic Guide möchte Ihnen Orientierung geben und dabei helfen, die besten Aussteller schnell zu finden. Die Auswahl von Architonic ist rein redaktionell und beschränkt sich auf Premium-Hersteller von Produkten, die für die Gestaltung von Gebäuden und Räumen relevant sind. Ein Guide von Architekten für Architekten.

The Architonic Guide allows you to find the best exhibitors quickly. Architonic's selection is purely an editorial one and is limited to high-end manufacturers whose products are relevant to the design of buildings and spaces. It's a guide by architects for architects.

ARCHITONIC.COM



make it

**SWISS
BAU**

**TYING IT ALL
TOGETHER.**
16–20 January 2018

Wann haben Sie sich das letzte Mal einer Sache so hingeeben, dass die Welt um Sie herum stillstand? Erleben Sie dieses Gefühl des perfekten Zusammenspiels. Erleben Sie unsere Küchenwelten: Besuchen Sie uns am Stand F72, Halle 2.1

www.franke.ch



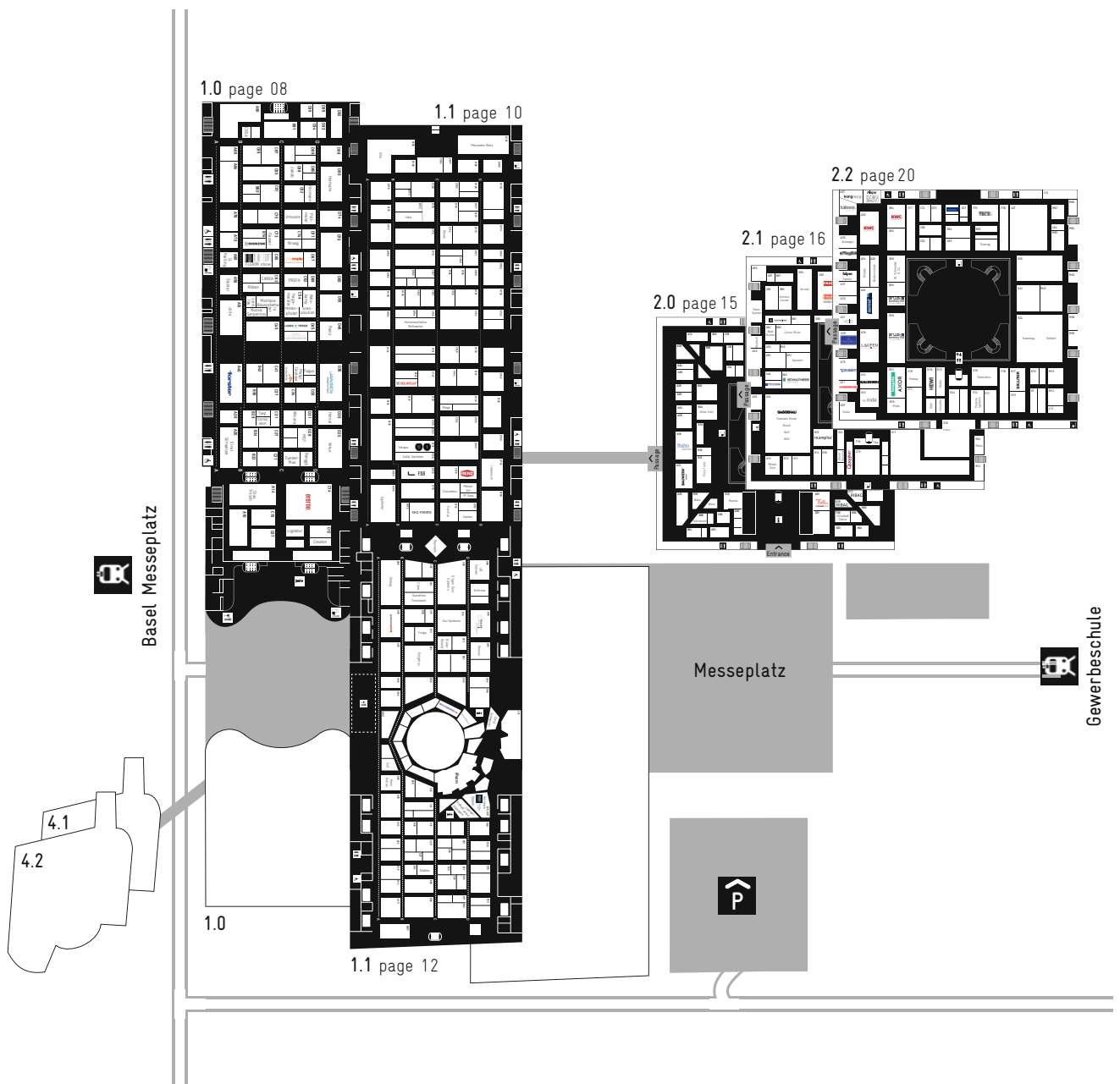
wonderful

— SWISSBAU 16. BIS 20.1.2018 —

MAKE IT WONDERFUL

FRANKE

OVERVIEW PLAN



Published by

Architonic AG | Müllerstrasse 71 | 8004 Zurich | Switzerland
T +41 44 297 20 20 | info@architonic.com | architonic.com

Partner



Softub[®]
WHIRLPOOLS

Der Whirlpool für Ihren Lieblingsort! Egal wo!
leicht. mobil. sauber. energieeffizient. komfortabel.

www.softub.ch

INDEX

hall	booth	page	hall	booth	page	hall	booth	page	hall	booth	page
4B Fenster A	1.1 D88	12	Eternit F	1.0 C14	08	Küing	2.2 A37	20	Schmidlin	2.2 E16	20
Akutech	2.1 A55	16	Fabromont	2.0 B08	15	KWC	2.2 A32 B34	20	Schulthess	2.1 B42	16
Alape	2.2 B39	20	Fagus	1.0 D41	08	L			SieMatic	2.1 L84	16
Alpnach	2.1 B51	16	Falper	2.2 A29	20	Laufen	2.2 A18	20	Siemens Home	2.1 A34	16
Alu-System	1.1 C76	12	Fantini	2.2 A29	20	Liebherr	1.1 L21	12	Sika	1.1 A180	10
Arbonia	1.2 D66		Feller	2.0 E07	15	Lignatur	1.0 C12	08	SimilarGroup	2.2 B18 B22	20
ArcelorMittal	1.0 C40	08	Finstral	1.1 C114	10	Lignotrend	1.0 D45	08	Sky-Frame	1.1 C111	10
Argolite	1.0 A50	08	Floor Gres	1.0 B66	08	M			Softub	2.0 D32	15
Armony Cucine	2.1 B86	16	Florim stone	1.0 B66	08	M Sora	1.1 D121	10	Solarlux	1.1 B146	10
Artweiger	2.2 A33	20	Fontarocca	1.0 C52	08	Mega	1.1 C136	10	Starpool	2.2 D76	20
Arwa	2.2 B18 B22	20	Forbo Flooring	2.0 A16	15	Mercedes-Benz	1.1 D191	10	Stebler	1.0 A56	08
Atlas Holz	2.0 B24	15	Forster	1.0 A40	08	Merial	2.1 D90	16	Stebler	1.1 C25 L26	12
Attika Feuer	1.2 B54		Franke	2.1 D92 F72	16	Metal Deploye	1.0 C43	08	Stebler	2.0 G23	15
Autodesk	1.1 L14	12	Franke Kitchen Systems	2.1 D92 F72	16	Metal Art	1.1 D123	10	Stobag	1.1 A88 L15	12
Autodesk	4.1 A31		Frego	1.1 C75	12	Metalpfister	1.0 C50	08	Stone Italiana	2.1 E14	16
Aweso	1.1 D113	10	FSB	1.1 B128	10	MGT	1.0 D27-D29	08	Sunreflex Frontwerk	1.1 C79	12
Axor	2.2 B12	20	FunderMax	1.0 C22	08	Miele	2.1 L32 M24	16	Suter Inox	2.1 K80 L80	16
B			G			Mrcité	1.1 C131	10	Swiss Krono	2.1 L61	16
Bauwerk Parkett	2.0 A12	15	Gaggenau	2.1 A34	16	Möbel Dick	2.1 A15	16	SwissFineLine	1.0 C46	08
Beat Bucher	2.1 A62	16	Geberit	1.F M12		Montana Bausysteme	1.0 C53	08	T		
Bienna	2.0 D10	15	Geberit	2.2 K24	20	N			Talsee	2.2 A35	20
Bodenschatz	2.2 A26	20	Gilgen Door Systems	1.1 C88	12	Naturofloor			Team 7	2.1 K81	16
Boller Roland	1.1 C72	12	Glas Marte	1.0 C64	08	Neff	2.1 A34	16	Tece	2.2 F75	20
Bora	2.1 L82	16	Glas Trösch	1.0 A14	08	Nelskamp	1.0 D57	08	Thumag	2.2 F63	20
Bosch	2.1 A34	16	Glassolution	1.0 D47	08	Nuova Serpentino	1.0 B50	08	Tiba	1.2 B55 B56	
Bruag	1.0 C72	08	Grasser	1.0 C73	08	O			Tiba	2.1 G17	16
BSH	2.1 A34	16	Grohe	1.1 L38	12	Orea	2.1 K92	16	Tisca Tiara	2.0 B12	15
Bulthaup	2.1 F68	16	Grohe	2.0 E10	15	P			Tjep	1.0 C33	08
C			H			Panoramah	1.1 A78	12	Tonwerk	1.2 B55	
Carea	1.0 C63	08	Hagemeister	1.0 C54	08	Peka-system	2.1 A81	16	U		
Casa dolce casa	1.0 B66	08	Hans Kohler	1.0 C47	08	Pfleiderer	2.1 A44	16	Umicore	1.0 C76	08
Casamood	1.0 B66	08	Hans Kohler	1.1 A46	12	Pollmeier	1.0 D73	08	V		
Cerim	1.0 B66	08	Hansgrohe	2.2 B12	20	Poresta Systems	2.2 E14	20	V-Zug	1.F M07	
Clara	1.1 C81	12	Heroal	1.0 D30	08	Prefa	1.0 C62	08	V-Zug	2.1 M42	16
Closemo	2.2 D11	20	Hewi	2.2 D18	20	Prolux	1.2 D88 D90		V-Zug	2.1 L50 L52	16
Colt	1.1 A48	12	Hörmann	1.0 D80 D77	08	Q			Velopa	1.1 C131	10
Columbus	1.1 C124	10	Hörmann	1.1 L33	12	Q-Railing	1.0 A60	08	Velux	1.0 D20	08
Cosentino	2.1 A82	16	Hydroplant	2.0 H10	15	Quooker	2.1 F15	16	Velux	1.1 L13	12
Crea	1.0 B90	08	I			R			Veriset	2.1 D93	16
Creaton	1.0 D10	08	Iconic Skin	1.0 C29	08	Raico	1.0 D48	08	Victrosa	1.1 D82	12
Cupastone	2.1 L92	16	Inda	2.2 A12	20	Raumfeeling	2.0 H16	15	Villeroy & Boch	2.2 A19	20
D			Internorm	1.1 D124	10	Raumplus Schweiz AG	2.1 D22	16	Vola	2.2 A21	20
Dallmer	2.2 K17	20	Isba	1.1 B170	10	Renggli	1.0 D21	08	W		
Danfoss	1.2 D48		J			Renson	1.1 D74	12	W. Schneider + Co.	2.2 B28	20
Desax	1.1 C174	10	Jakob	1.0 C88	08	Renx	1.1 D127	10	Walo	2.0 B10 D07	15
Doorbird	2.0 G21	15	Jansen	1.0 D36	08	Reynaers	1.1 B94	12	Wesco	2.1 K84	16
Dormakaba	1.1 C56 L98	12	Joris Ide	1.0 B56	08	Rheinzink	1.0 B70	08	Wicona	1.0 C32	08
Dornbracht	2.2 B39	20	Julius Blum	2.1 B62	16	Ribag	2.0 G10 G17	15			
Duka	2.2 A07	20	Jung	2.0 H22	15	Rika	1.2 A84				
Duravit	2.2 A15	20	K			RMIG	1.0 B52	08			
Duscholux	2.2 A22	20	Kaldewei	2.2 A14	20	Röben	1.0 B58	08			
E			Keller	1.1 D78	12	Romay	2.2 C19	20			
Echo Büromöbel	2.0 G19	15	Keller Spiegelschränke	2.2 D19	20	Rottweiler	1.1 C155	10			
Effegibi	2.2 A31	20	Keramag	2.2 K24	20	Rüegg Cheminée	1.2 B53				
EgoKiefer	1.1 A100	10	Klafs	2.2 B10	20	S					
Enlightco	1.1 B74	12	Klinker-Zentrale	1.0 A176	08	S.Siedle & Söhne	2.0 F06	15			
Ernst Schweizer	1.0 A20	08	König + Neurath	2.0 G31	15	Salto Systems	1.1 C128	10			
Ernst Schweizer	1.1 L55	12	Koralle	2.2 A24	20	Sam	2.2 C14	20			
						Scarabeo	2.2 A11	20			

This list was printed on 22nd November 2017. We sincerely apologise if we have omitted or misplaced any top-quality manufacturers.

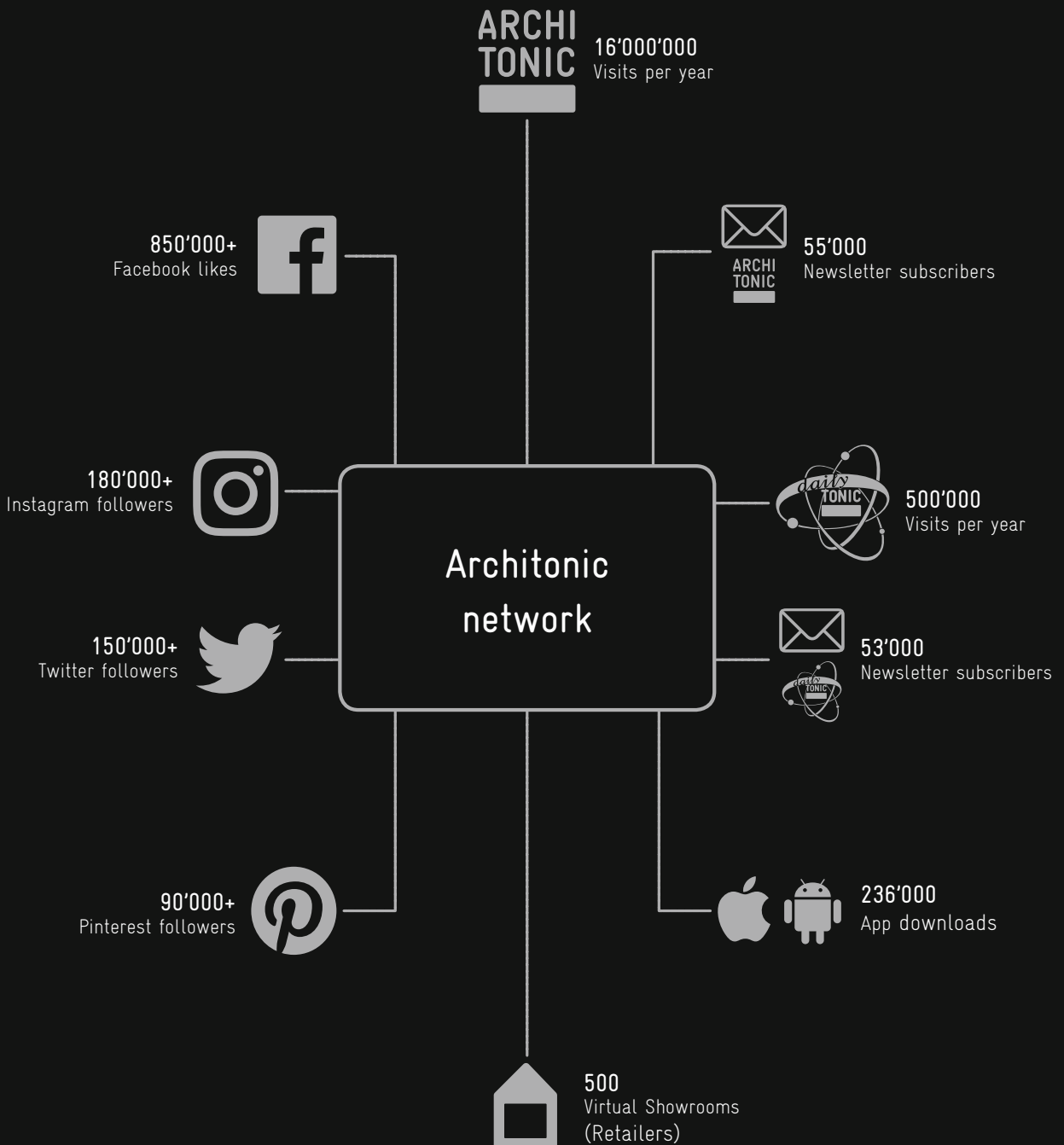




GET TRUSTED PRODUCT INFORMATION
AND THE BEST DEALS DIRECTLY FROM
PREMIUM BRANDS AND RETAILERS

Architonic is the world's leading research tool for the specification of premium architectural and design products. Our curated database currently provides information about more than 300,000 products from 1,500 brands and 11,500

designers. 16 million architects, interior designers and design enthusiasts annually choose Architonic as their guide to the very best.



ARCHITONIC MATERIAL TENDENCIES

MOST POPULAR MATERIALS 2012–2017

Material availability and faculty are quantifiable factors in defining architects' and designers' material choices, when based on physical, economical and practical rationales. Material advancements, trends and tendencies, on the other hand, define a design's cultural currency. Architects' and designers' material choices, in this regard, can have long-lasting ramifications, and understanding the rationales behind these choices is often challenging.

Qualitative analysis is essential to identifying what materials are next and which will stand the test of time. Conducting qualitative surveys and interviews, the series Material Tendencies is part of Architonic's ongoing effort to map the contemporary landscape of architecture and design.

Starting in early 2015 until present, Architonic has gathered opinions from renowned designers and industry leaders who share their experience when it comes to material choices, helping us all gain a more complete picture of the current material scene and better predict what lays ahead.

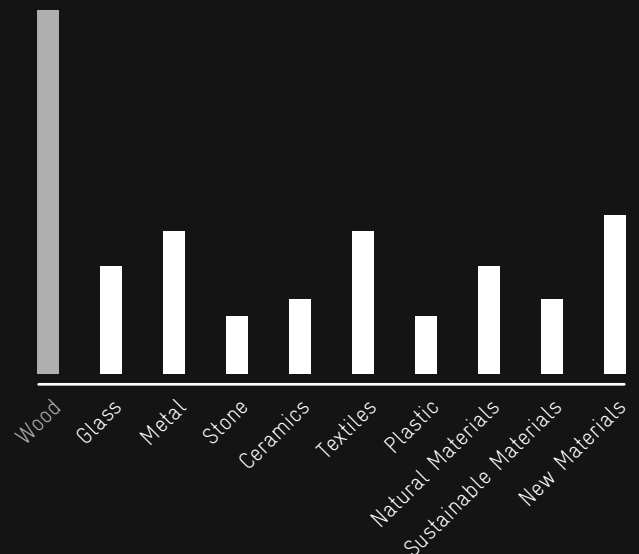
Moreover, the Architonic team has fought its way through thousands of numbers and collected tracking information, with a steady focus on materials and their relative popularity. Architonic provides over 38,000 materials and finishes in its curated database – among 300,000 further products from 1,500 brands and 11,300 designers. Based on the number of relevant search queries entered in the text-search field on architonic.com, the team has identified the most popular materials reaching back to 2012!

The result is a comparative analysis – accompanied by current themes from the experts' point of view – of the most searched-for key materials in the form of compelling infographics that reveal directions and tendencies.

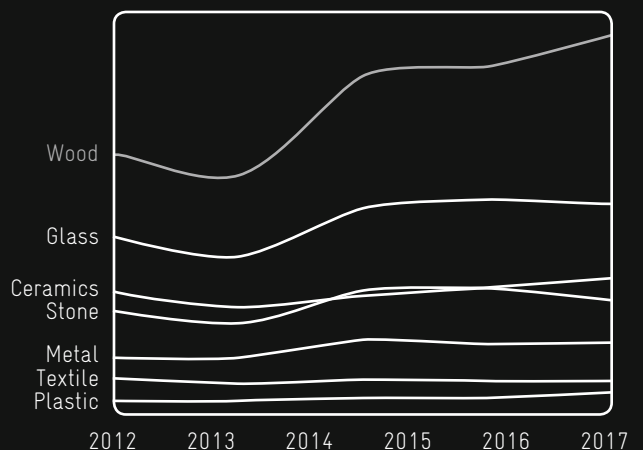
Followed by glass, it is impossible to miss that wood – one of the most ancient materials used for construction and fabrication – is the most popular material from perspectives of both designers and users. Behind wood, designers chose textile, metal and natural materials as their favourites.

For all true materials lovers, we would like to invite you to explore over 38,000 materials and finishes on Architonic: <http://bit.ly/2z6px0l>

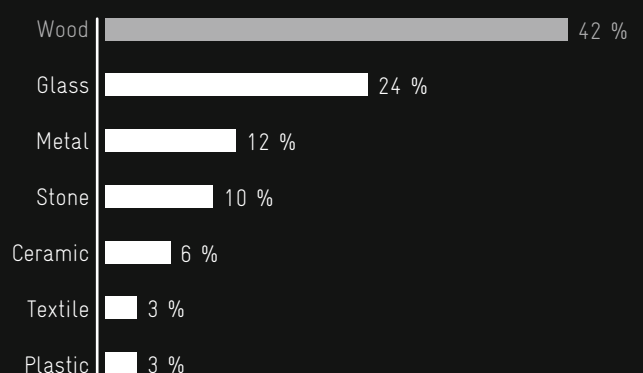
Designer's Top 10 favourite materials

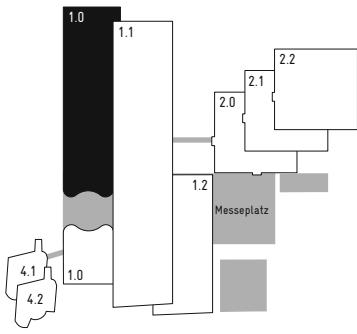


Most popular materials on architonic 2012–2017



Most viewed materials on architonic 2016/17





NOTES

.....

.....

.....

.....

.....

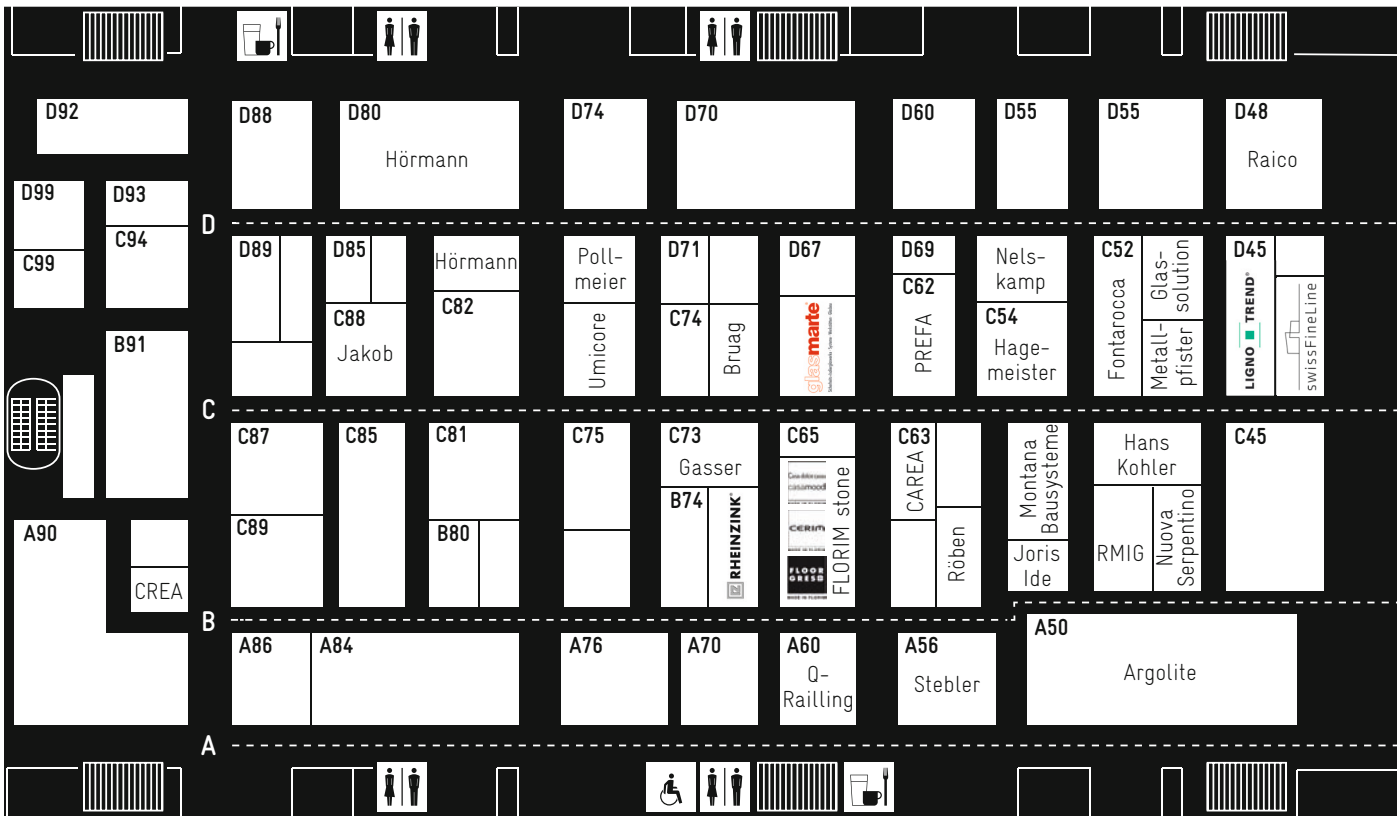
.....

.....

.....

HALL 1.0

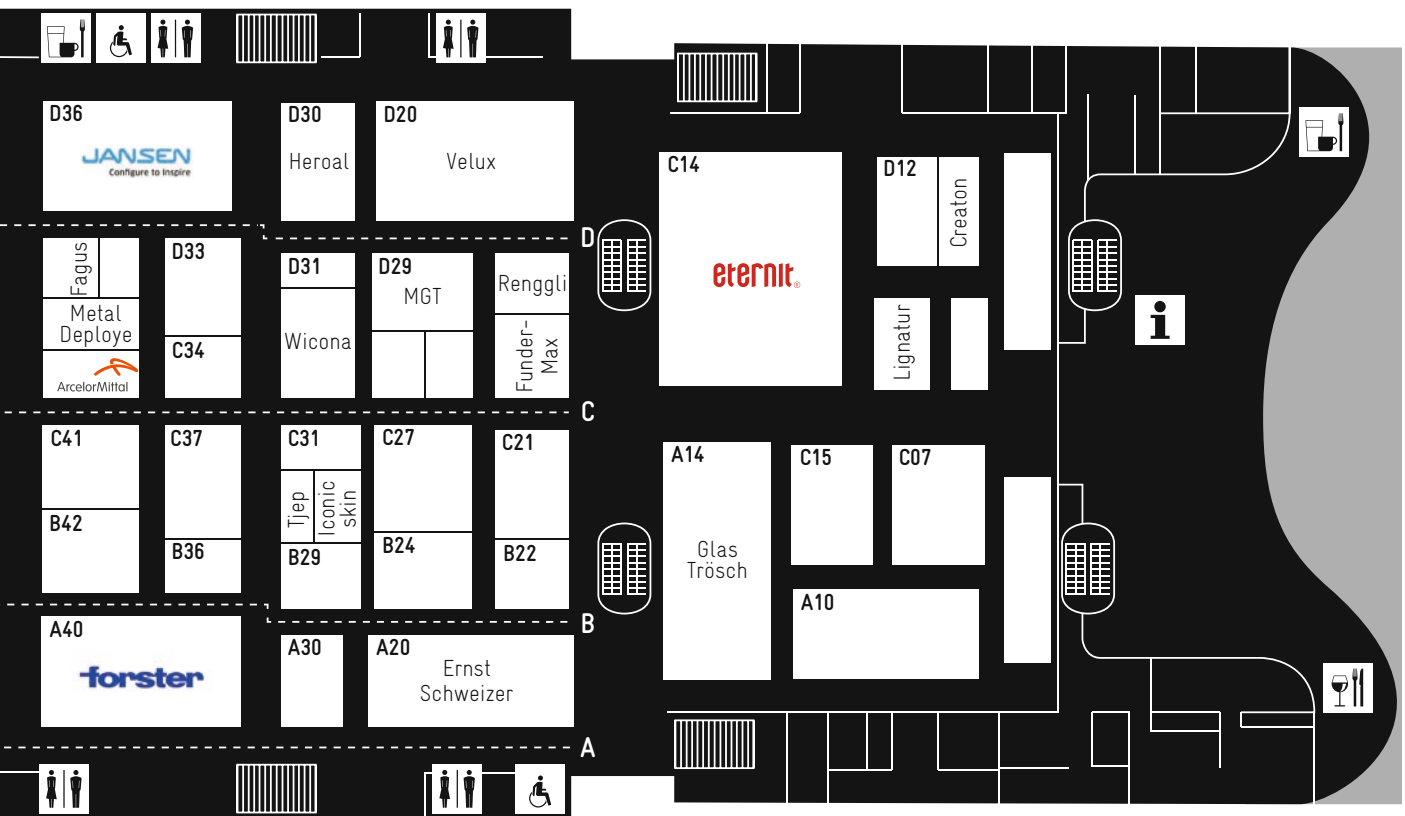
ArcelorMittal	C40	Eternit	C14	Grasser	C73
Argolite	A50	Fagus	D41	Hagemeister	C54
Bruag	C72	Floor Gres	B66	Hans Kohler	C47
Carea	C63	Florim stone	B66	Heroal	D30
Casa dolce casa	B66	Fontarocca	C52	Hörmann	D80 D77
Casamood	B66	Forster	A40	Iconic Skin	C29
Cerim	B66	FunderMax	C22	Jakob	C88
Crea	B90	Glas Marte	C64	Jansen	D36
Creton	D10	Glas Trösch	A14	Joris Ide	B56
Ernst Schweizer	A20	Glassolution	D47	Klinker-Zentrale	A176

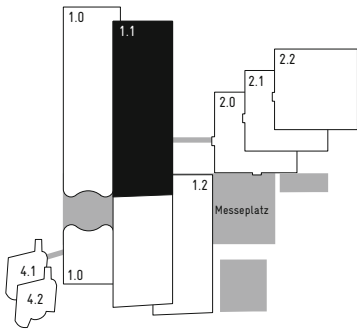


ROHBAU BAUMATERIALEN METALLBAU

Lignatur	C12	Q-Railing	A60	Velux	D20
Ligotrend	D45	Raico	D48	Wicona	C32
Metal Deploye	C43	Renggli	D21		
Metallpfister	C50	Rheinzink	B70		
MGT	D27-D29	RMIG	B52		
Montana Bausysteme	C53	Röben	B58		
Nelskamp	D57	Stebler	A56		
Nuova Serpentino	B50	SwissFineLine	C46		
Pollmeier	D73	Tjep	C33		
Prefa	C62	Umicore	C76		

This list was printed on 22nd November 2017. We sincerely apologise if we have omitted or misplaced any top-quality manufacturers.





NOTES

.....

.....

.....

.....

.....

.....

.....

The floor plan shows a grid of booths with the following labels and features:

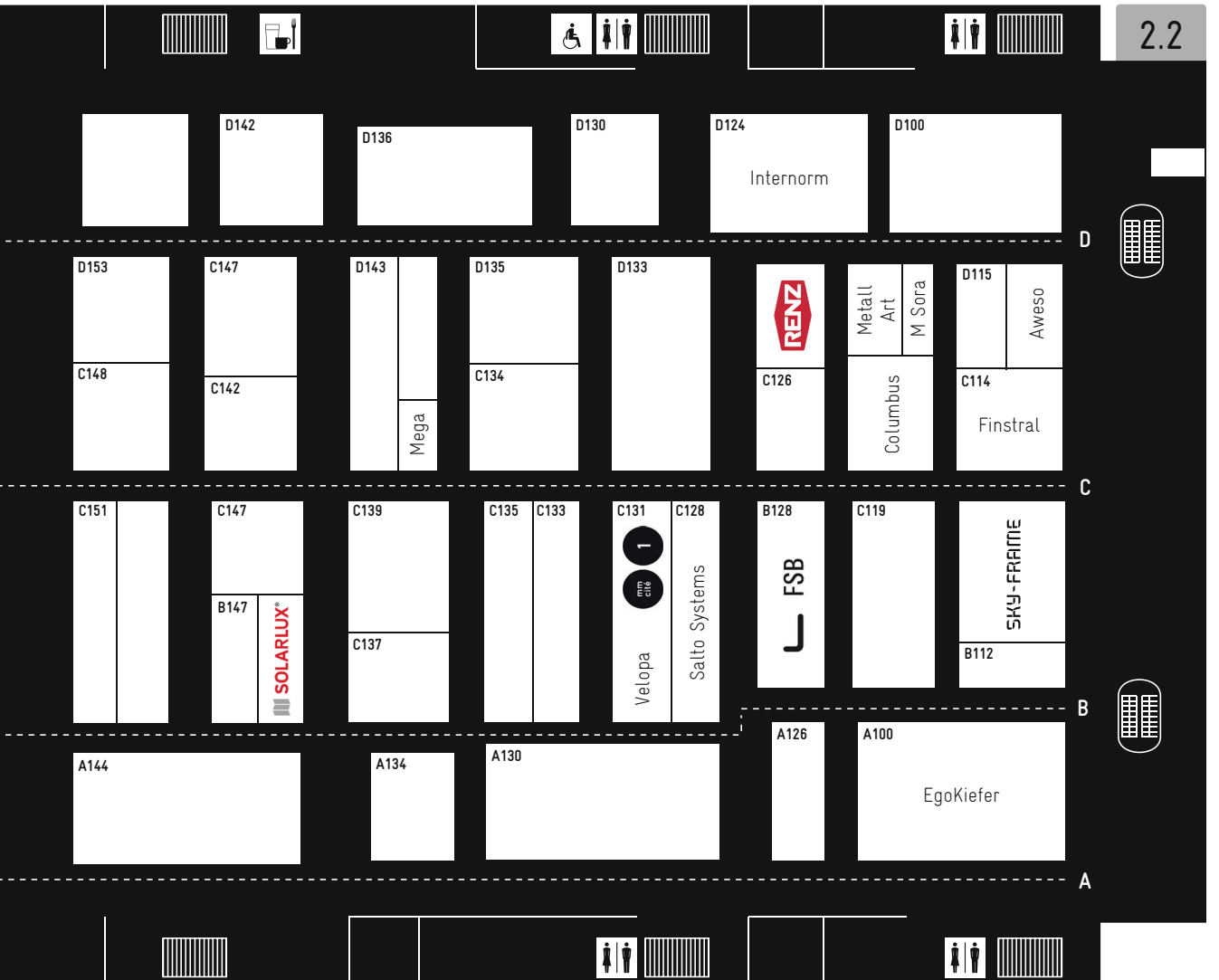
- Booths:** A180, B180, C185, C187, C186, D191 (Mercedes-Benz), D188, D178, D170, D168, D160, D156, E152, D183, D177, D175, D173, D171, D169, D167, C152, C182, C176, C174 (Desax), C168, C166, C164, C158, C183, C179, C175, C173, C167, C161, C159 (Holzmanufaktur Rottweiler), B172, B173, B154, B158, C157, A178, A176, A172, A168, A162, A158, A154.
- Aisles:** A, B, C, D.
- Other Labels:** Sika, Isba.
- Icons:** Restrooms, Bar, Wheelchair, and other service symbols.

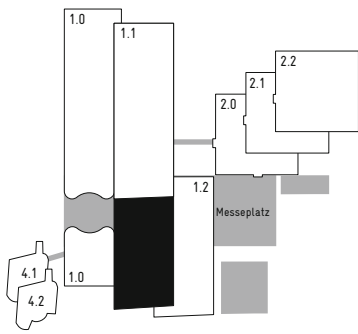
HALL 1.1

Aweso	D113	Isba	B170	Sika	A180
Columbus	C124	M Sora	D121	Sky-Frame	C111
Desax	C174	Mega	C136	Solarlux	B146
EgoKiefer	A100	Mercedes-Benz	D191	Velopa	C131
Finstral	C114	Metall Art	D123		
FSB	B128	Mmcité	C131		
Holzmanufaktur Rottweiler	C155	Renz	D127		
Internorm	D124	Salto Systems	C128		

This list was printed on 22nd November 2017. We sincerely apologise if we have omitted or misplaced any top-quality manufacturers.

DÄMMUNG
TIEFBAU
AUSSENANLAGEN
FENSTER | TÜREN





NOTES

.....

.....

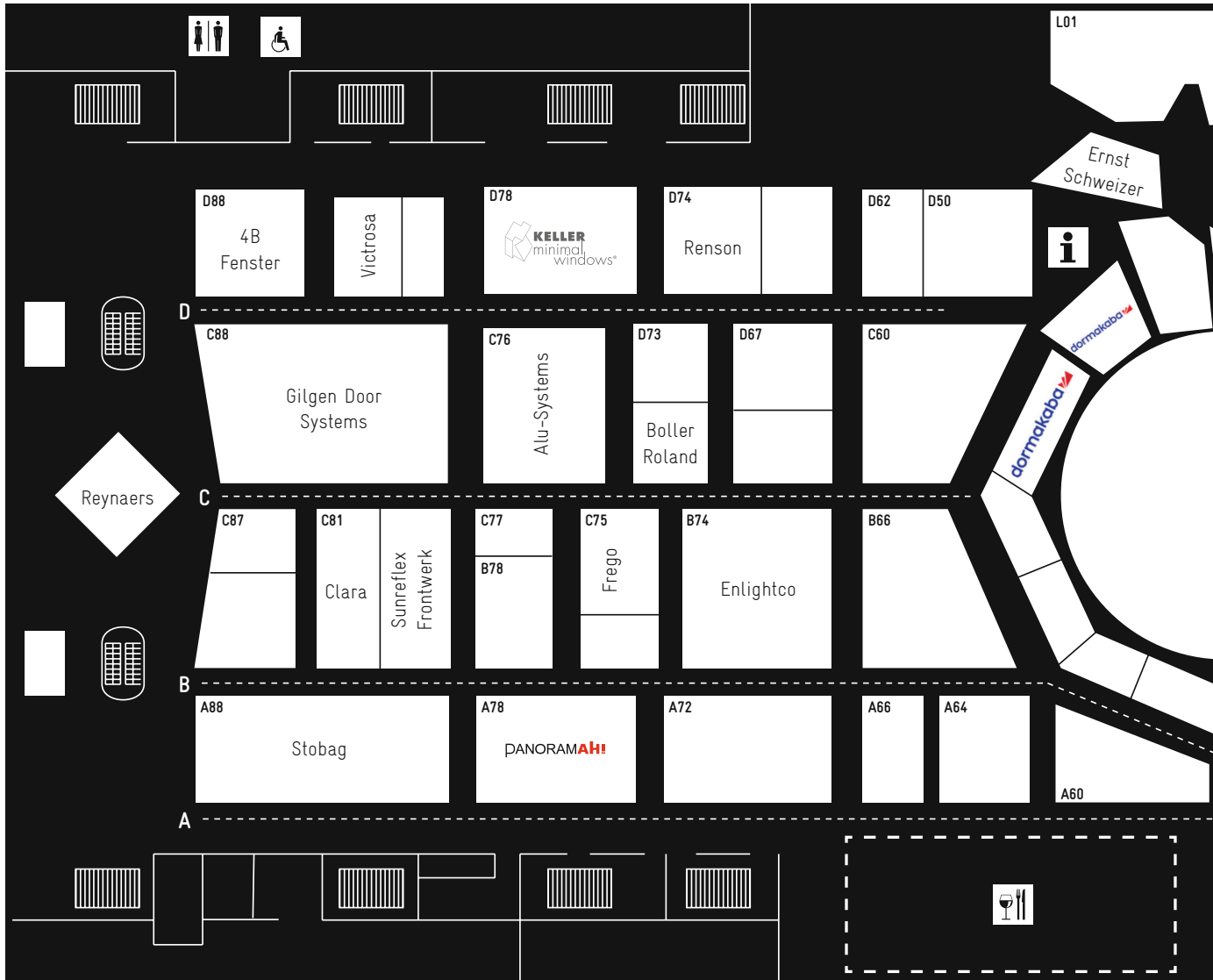
.....

.....

.....

.....

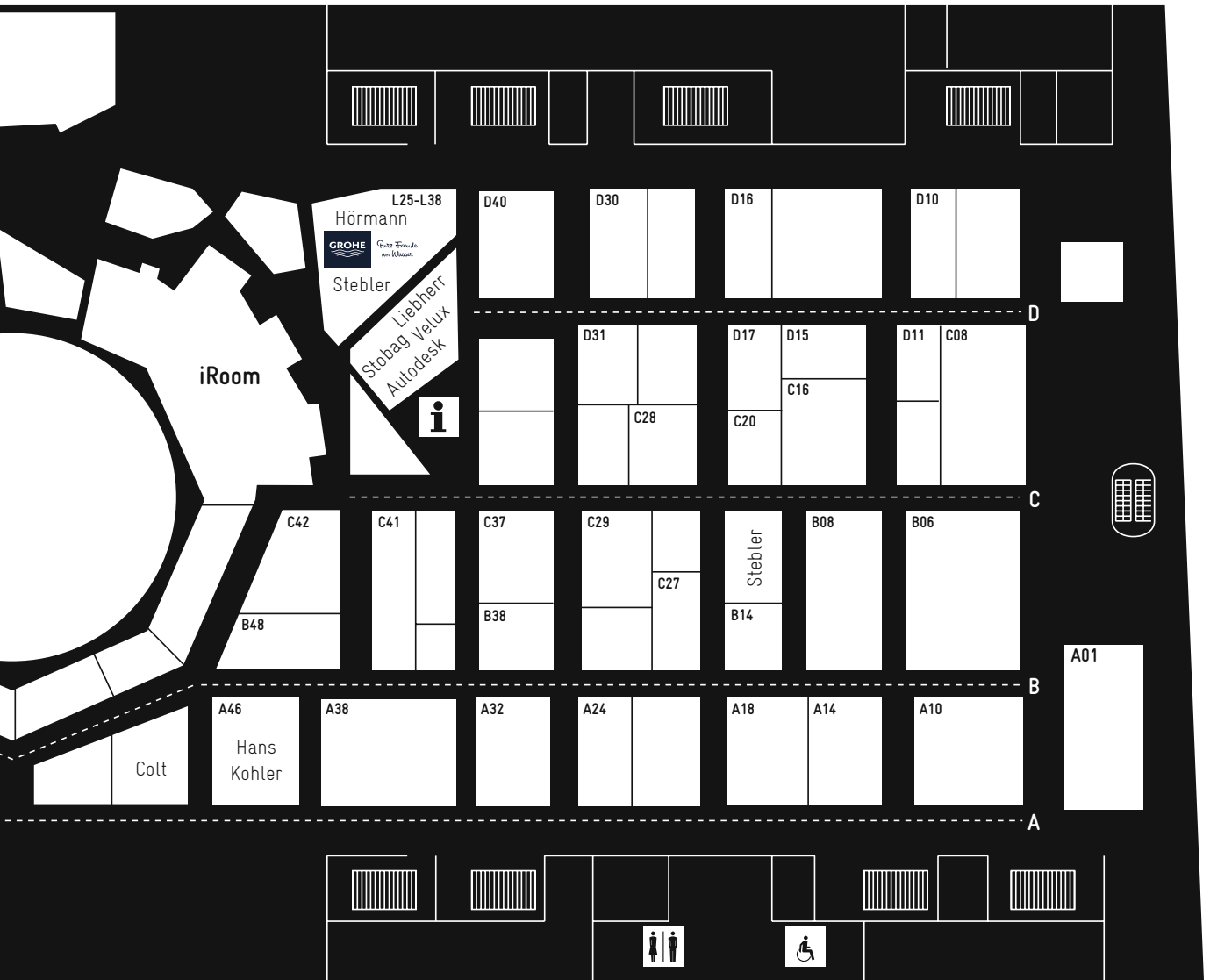
.....



HALL 1.1

4B Fenster	D88	Ernst Schweizer	L55	Panoramah	A78
Alu-System	C76	Frego	C75	Renson	D74
Autodesk	L14	Gilgen Door Systems	C88	Reynaers	B94
Boller Roland	C72	Grohe	L38	Stebler	C25 L26
Clara	C81	Hans Kohler	A46	Stobag	A88 L15
Colt	A48	Hörmann	L33	Sunreflex Frontwerk	C79
Dormakaba	C56 L98	Keller	D78	Velux	L13
Enlightco	B74	Liebherr	L21	Victrosa	D82

HEIZUNG | ENERGIE
LÜFTUNG
AUTOMATION
BEWIRTSCHAFTUNG



SWISSBAU FOCUS.

Die Veranstaltungs- und Netzwerkplattform.
Halle 1.0 Süd.



Theo Wehner
Professor für Arbeits- und
Organisationspsychologie
ETH Zürich

Dienstag, 16. Januar 2018
16.00 – 17.00 Uhr

DIE GENERATIONEN IM NEUEN SPANNUNGSFELD

NEUE PERSPEKTIVEN FÜR DEN ALPINEN RAUM



Mario Botta
Architekt

Mittwoch, 17. Januar 2018
16.00 – 17.00 Uhr

Adrian Altenburger

Vizepräsident SIA; Instituts- und
Studiengangleiter Institut für Gebäude-
technik & Energie, Hochschule Luzern

Donnerstag, 18. Januar 2018
16.00 – 17.00 Uhr



DAS GEBÄUDE ALS DREH- UND ANGELPUNKT DER ENERGIESTRATEGIE

AUF DEM WEG ZUR TOTALEN VERNETZUNG



Pascale Vonmont
CEO/Direktorin
Gebert Rüt Stiftung

Freitag, 19. Januar 2018
16.00 – 17.00 Uhr



Charles Renfro
Diller Scofidio + Renfro
Architects

Francis Kéré
Kéré Architecture

Samstag, 20. Januar 2018
11.00 – 13.00 Uhr



SIGNATURE OR COLLABORATIVE ARCHITECTURE AND ENGINEERING: ALLE ZUSAMMEN ODER JEDER FÜR SICH?

Veranstalter: Architektur Dialoge

**SWISS
BAU**

Eine Übersicht mit allen rund 70 Veranstaltungen an der Swissbau
finden Sie unter swissbau.ch/events oder in der Swissbau App.

**BRINGT ALLES
ZUSAMMEN.**

Atlas Holz
 Bauwerk Parkett
 Bienna
 Doorbird
 Echo Büromöbel
 Fabromont
 Feller
 Forbo Flooring
 Grohe
 Hydroplant
 Jung

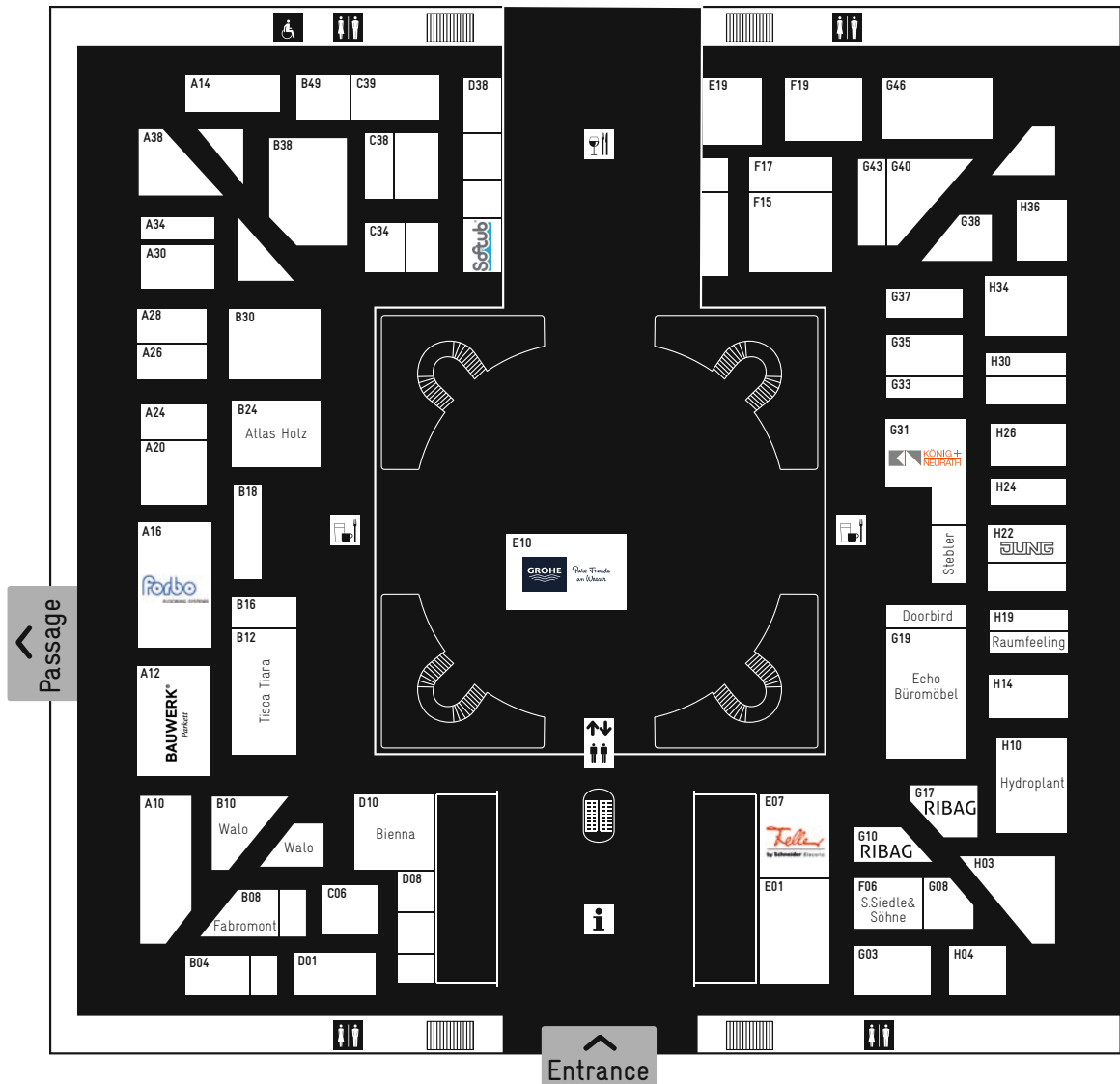
B24
 A12
 D10
 G21
 G19
 B08
 E07
 A16
 E10
 H10
 H22

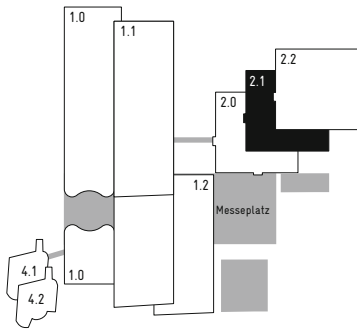
König + Neurath
 Raumfeeling
 Ribag
 S.Siedle&Söhne
 Softub
 Stebler
 Tisca Tiara
 Walo
 G31
 H16
 G10|G17
 F06
 D32
 G23
 B12
 B10|D07

HALL 2.0

RAUMWELTEN

This list was printed on 22nd November 2017. We sincerely apologise if we have omitted or misplaced any top-quality manufacturers.





NOTES

.....

.....

.....

.....

.....

.....

.....

.....

THE WORLD OF DESIGN
TO GO!
DOWNLOAD FOR FREE
YOUR FAVOURITE
ARCHITONIC DESIGN
APP.

ARCHITONIC.COM/EN/APPS

INFO

HALL 2.1

Akutech	A55	Pfleiderer	A44
Alpnach	B51	Quooker	F15
Armony Cucine	B86	Raumplus Schweiz AG	D22
Beat Bucher	A62	Schulthess Maschinen	B42
Bora	L82	SieMatic	L84
Bosch	A34	Siemens Home	A34
BSH	A34	Stone Italiana	E14
Bulthaup	F68	Suter Inox	K80 L80
Cosentino	A82	Swiss Krono	L61
Cupastone	L92	Team 7	K81
Franke	D92 F72	Tiba	G17
Franke Kitchen Systems	D92 F72	V-Zug	M42 L50 L52
Gaggenau	A34	Veriset	D93
Julius Blum	B62	Wesco	K84
Merial	D90		
Miele	L32 M24		
Möbel Dick	A15		
Neff	A34		
Orea	K92		
Peka-system	A81		

This list was printed on 22nd November 2017. We sincerely apologise if we have omitted or misplaced any top-quality manufacturers.

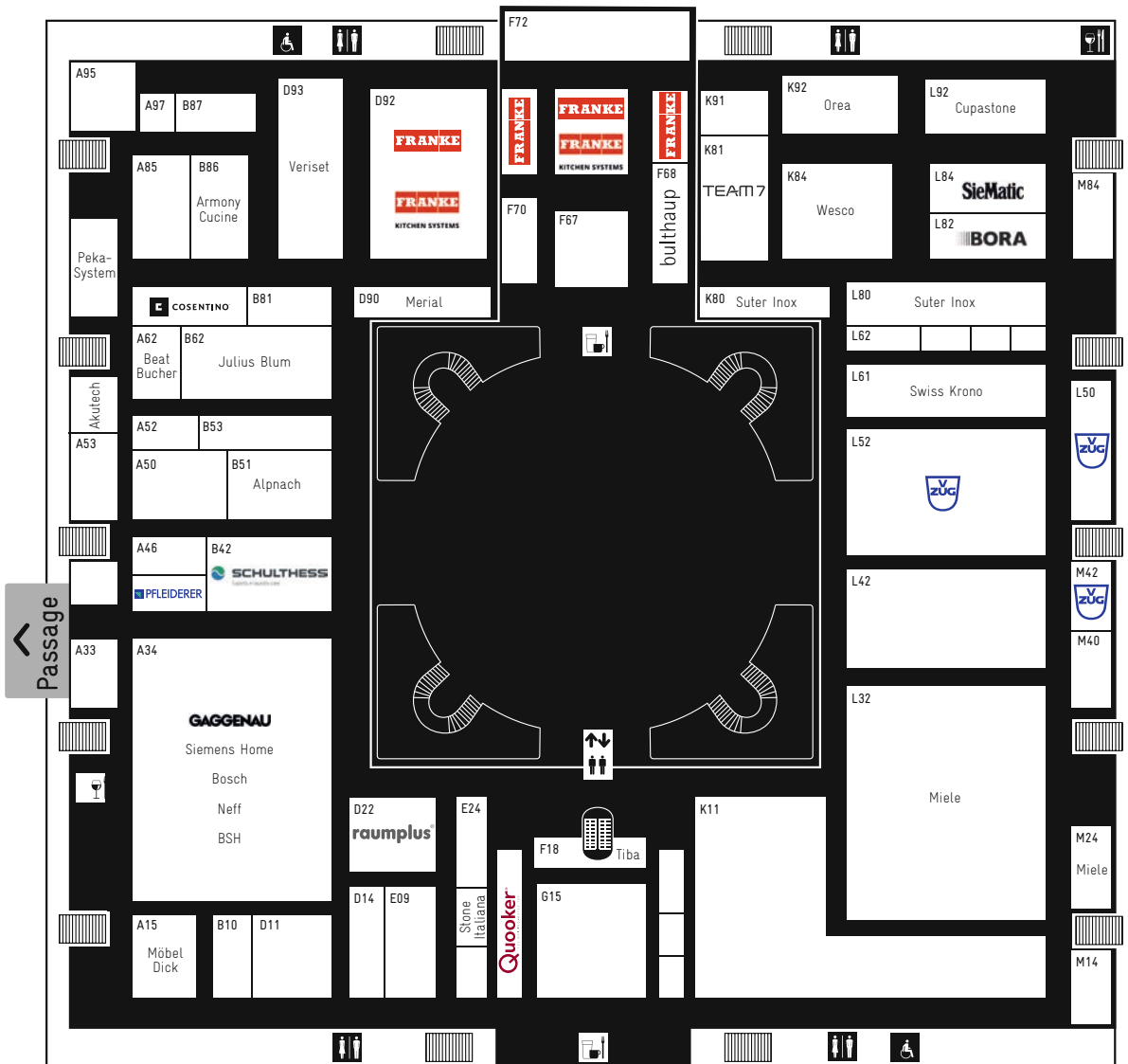


**DER
KOCHEND
WASSER
HAHN**

Besuchen Sie uns an unserem Stand F15



KÜCHEN





ALFREDO HÄBERLI,
DESIGNER

»» I think it's the best. It is a big help because you have a great overview of the best, which is essential today. «

LORENZA LUTI,
MARKETING & RETAIL DIRECTOR
KARTELL

»» Architonic is very important for us because it gives us the potential to have direct relations between our company and architects around the world. «

CLAUDIO BELLINI,
DESIGNER + ARCHITECT

»» Architonic is a very good reference for us as a studio. It is fresh, smart, easy and offers a top selection of quality products. «

JORRE VAN AST,
CREATIVE DIRECTOR + PRINCIPAL
ARCO

»» Architonic is a perfect platform for architects to get to know us and contact us, especially outside those markets where we are not so known. «

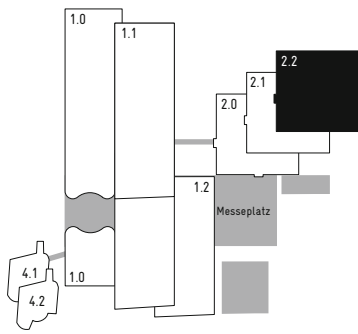
Systemdesign

Home | Public | Care | Kids



HEWI Systeme sind vielseitig einsetzbar: Das modulare Prinzip der HEWI Systeme ermöglicht eine kompromisslose Gestaltung, die den individuellen Anforderungen entsprechen.

Besuchen Sie HEWI auf der Swissbau in Basel, Halle 2.2, Stand D 18 und erfahren Sie mehr zum Systemdesign.



NOTES

.....

.....

.....

.....

.....

.....

.....

.....

HALL 2.2

THE ARCHITONIC
NEWSLETTER KEEPS
YOU UP TO SPEED,
BRINGING YOU THE
LATEST ON YOUR
FAVOURITE SUBJECTS.

ARCHITONIC.COM/SUBSCRIBE

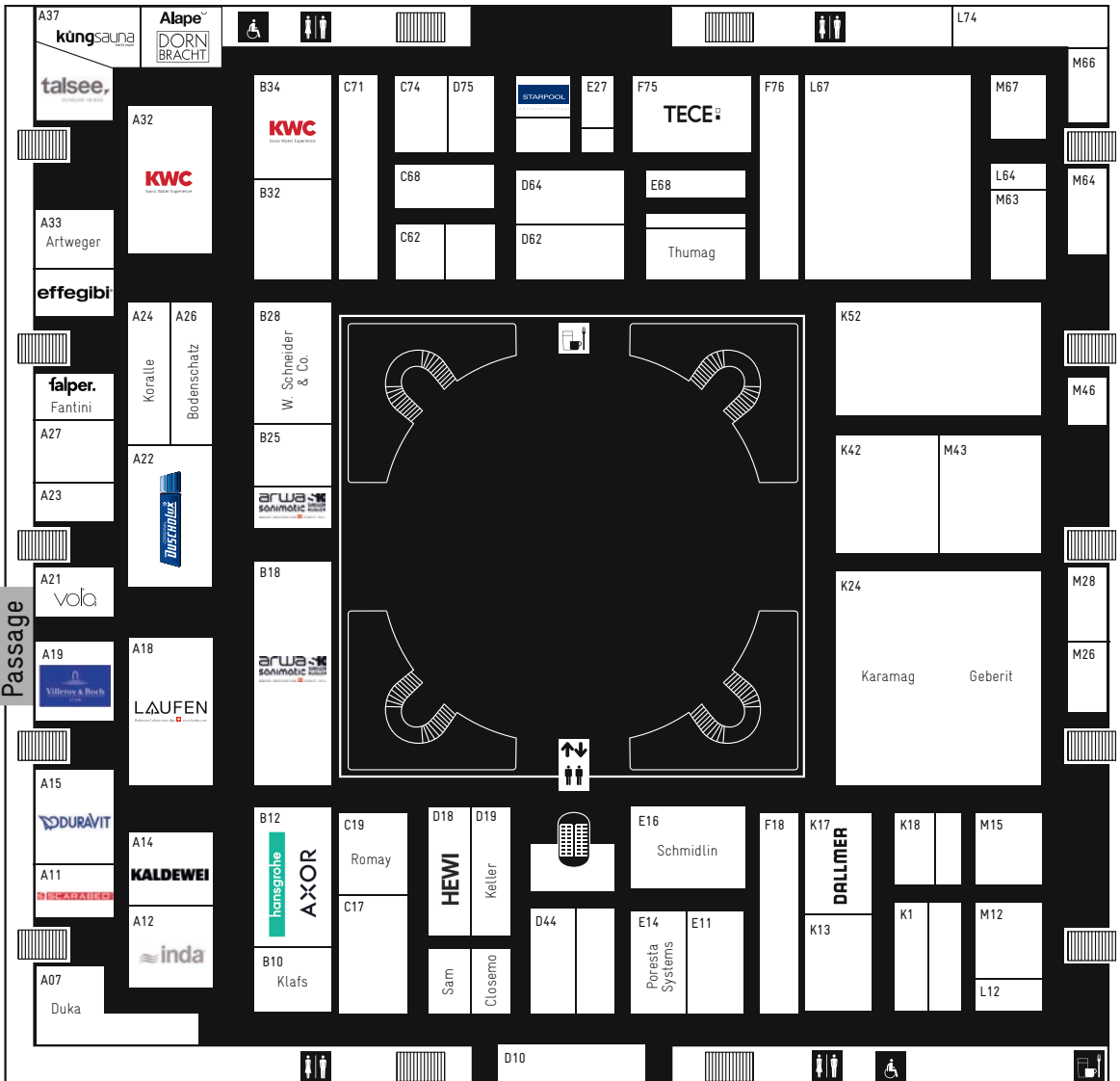
INFO

Alape	B39	Küng	A37
Arwa	B18 B22	KWC	A32 B34
Axor	B12	Laufen	A18
Bodenschatz	A26	Poresta Systems	E14
Closemo	D11	Romay	C19
Dallmer	K17	Sam	C14
Dornbracht	B39	Scarabeo	A11
Duka	A07	Schmidlin	E16
Duravit	A15	SimilorGroup	B18 B22
Duscholux	A22	Starpool	D76
Effegibi	A31	Talsee	A35
Falper	A29	Tece	F75
Fantini	A29	Thumag	F63
Geberit	K24	Villeroy & Boch	A19
Hansgrohe	B12	Vola	A21
Hewi	D18	W. Schneider + Co.	B28
Inda	A12		
Kaldewei	A14		
Keller Spiegelschränke	D19		
Keramag	K24		
Klafs	B10		
Koralle	A24		

This list was printed on 22nd November 2017. We sincerely apologise if we have omitted or misplaced any top-quality manufacturers.



BAD SANITÄR TRENDWELT BAD



Ceramica italiana.

**ONLY THE BEST
FOR THE BATH**

mod. TEOREMA 2.0 ULTRA SLIM

scarabeosrl.com

WIE
SINATRA &
NEW YORK



KWC

KWC **ERA**

Das perfekte Zusammenspiel
von Armatur & Spüle.

kwc.ch/perfecttogether